

Falls School *of* Business at Anderson University

Hardacre Hall
1303 East Fifth Street
Anderson, IN 46012-3468
(765) 641-4358
www.anderson.edu/falls

DIRECTIONS

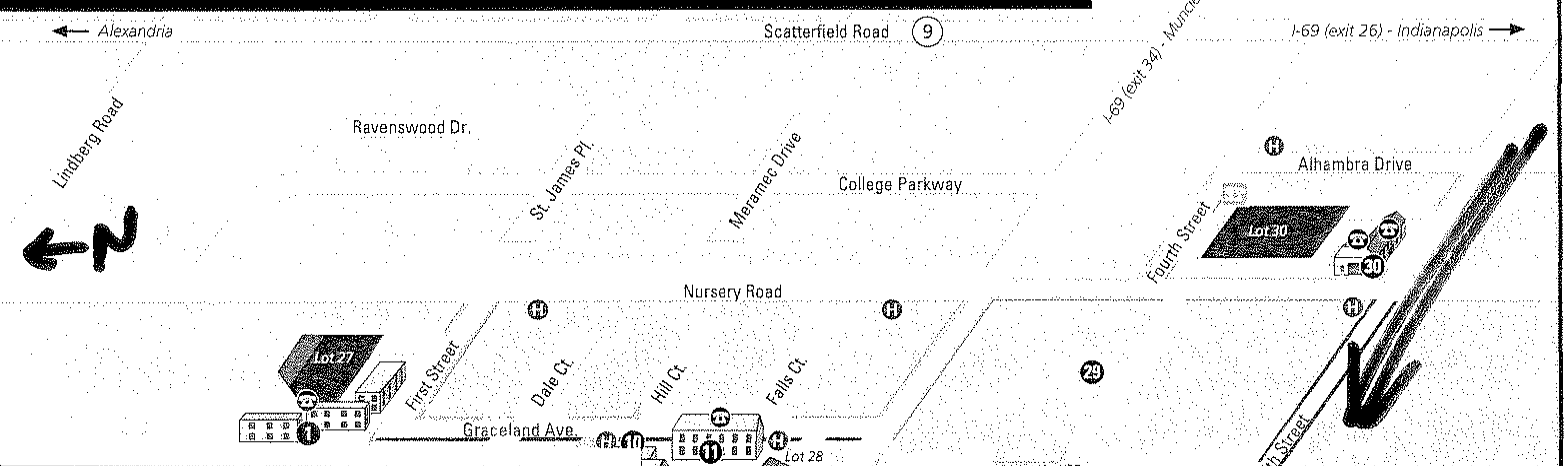
CAMPUS MAP

PARKING INSTRUCTIONS

ABOUT THE FSB

ABOUT SIFE

ANDERSON UNIVERSITY

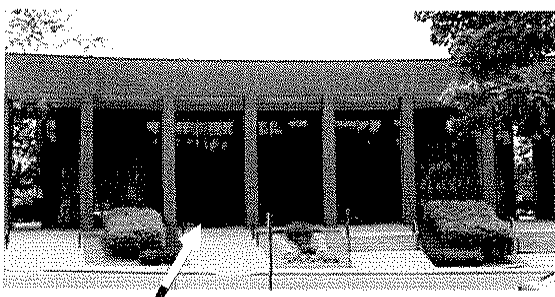


Welcome to:
Reardon Auditorium
 1015 E. 5th Street
 Anderson University – Anderson, IN

Directions:
From the South

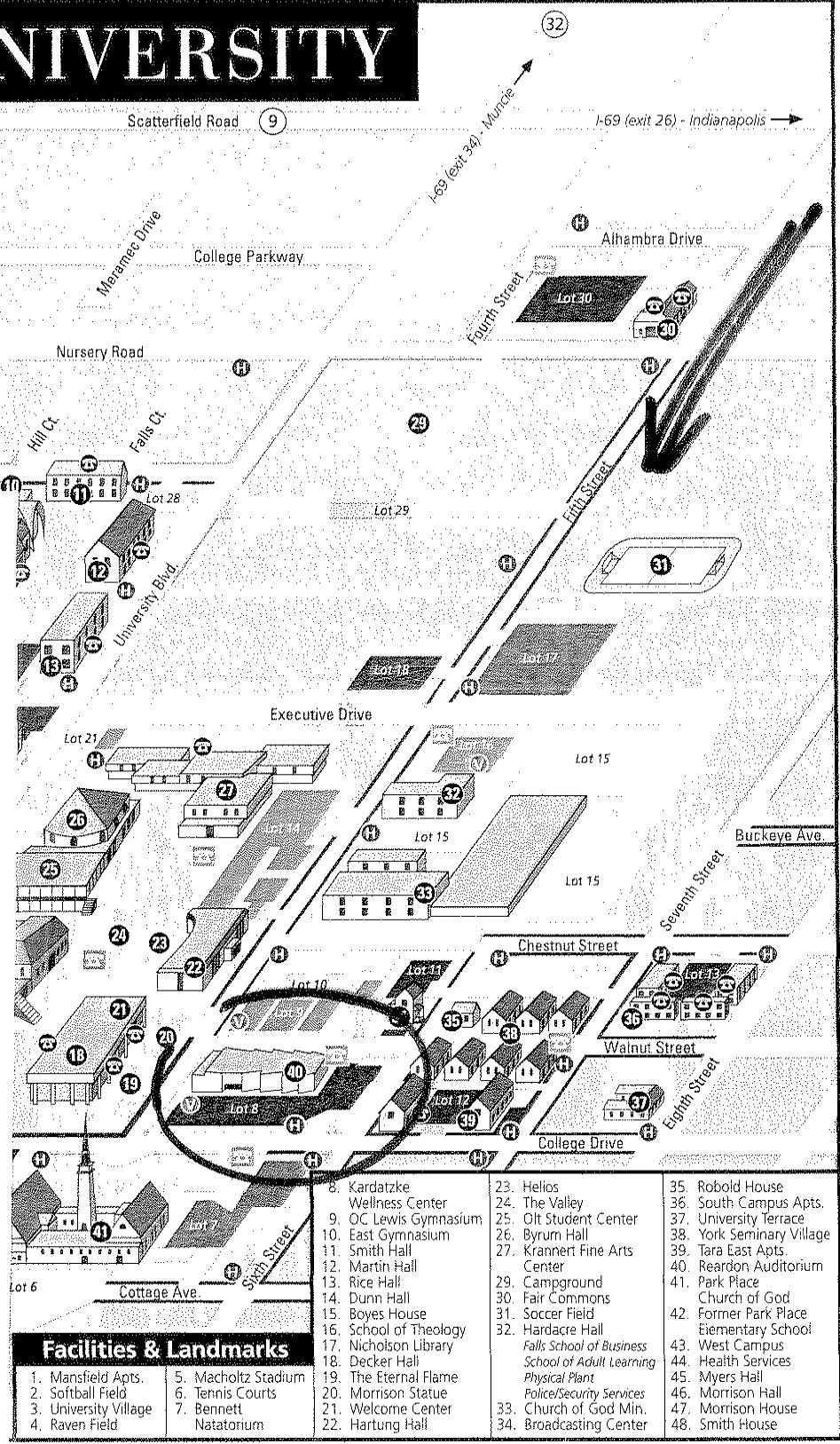
I-65: Follow I-65 north to I-465 east to I-69. Take I-69 north to exit 26 (SR 9). Take SR 9 north about four miles to Fifth Street. Turn left and drive a few blocks to campus.

Reardon Auditorium (#40) is located on your left. Park in Lot 8 west of the auditorium or along the street.



Enter doors on front of the building unless signs direct you elsewhere.

www.anderson.edu/welcome/map/



Anderson University is a private Christian university of 2,750 undergraduate and graduate students in central Indiana. Anderson continues to be recognized as a top Christian college: in 2008, U.S. News and World Report ranked Anderson University among the best colleges and universities in the Midwest for the fourth consecutive year. Established in 1917 by the Church of God, Anderson University offers more than 65 undergraduate majors and graduate programs in business, education, music, nursing and theology.



Academic and Christian Discovery

www.anderson.edu



Falls School of Business

About the Falls School of Business

The Falls School of Business at Anderson University offers both a master's and doctorate in business administration and a joint master's degree with the School of Nursing in business administration and nursing as well as undergraduate majors in accounting, economics, finance, management, and marketing. In addition, there are joint majors in music business and computer science, and a business administration major available to students interested in double majors.

Hundreds of employers in central Indiana have sent their employees to Anderson University to earn a **Master of Business Administration** degree. The program currently has approximately 75 working professionals studying at AU, creating opportunities for our undergraduate students or internships and employment. There are more than 1,000 AU MBA graduates in the region. The AU MBA program is the fifth largest MBA program in the state of Indiana.

U.S. News & World Report ranked Anderson University among the best universities in the Midwest offering master's level degree programs. Institutions in this category offer a full range of both undergraduate and master's level degree programs. The magazine's 2008 guide to "America's Best Colleges" marks the fourth consecutive year that Anderson University has been listed among the best in its class.

Business Reform magazine in 2005 and 2006 named Falls School of Business as the "Dean's Choice" among business schools with a biblical foundation. Deans from business programs at Christian colleges and universities nationwide picked their top ten recommendations for the best undergraduate business program in the country. The Falls School of Business was ranked as the #1 choice.



Falls School of Business

About Anderson University's Students in Free Enterprise

Anderson University SIFE is about developing passionate leaders who are positively impacting the world. How do we do that? We bring together students from all over campus--in a variety of majors, with a variety of interests--who are excited about learning and serving. We are dedicated to making a lasting impact in not just the Anderson/Madison County communities, but in communities throughout the world.

Together our community, entrepreneurial, environmental, and global impact programs allow us to educate citizens of all ages on vital economic concepts, enable entrepreneurs to grow their businesses--thereby create job opportunities, and magnify the importance of thinking globally by both educating and enabling citizens of other countries and here at home. While implementing these programs, we will impact our community, grow closer as a team, and change the world one person at a time.

A head for business. A heart for the world.



sife.anderson.edu | P:(765) 641-3823 | sife@anderson.edu